



BLUE STAR



REFRIGERATION SOLUTIONS TO HELP  
YOUR BUSINESS DO BETTER.



Blue Star takes great pride in celebrating its Platinum Jubilee this year, marking a long and successful journey of growing to become an industry leader synonymous with innovation, quality and world-class customer experiences, throughout several countries across the globe.

Leveraging over 7 decades of experience in building air conditioning and refrigeration solutions, Blue Star's commercial refrigeration offerings are spread across a variety of applications at hotels, hostels, schools & universities and eateries. Each world-class solution is designed for optimum preservation and storage of foods and produce, ensuring freshness for longer periods. Commercial refrigeration solutions include, Reach-in Chillers & Freezers, Under Counter Chillers & Freezers, Modular Cold Rooms, Multi-Deck Open Chillers, Island Freezers, Deep Freezers, Bottle Coolers.

Blue Star also offers the widest range of Storage Water Coolers with different choices of purification, all tested for superior performance in high-ambient conditions.

Apart from every product complying with high-quality ISO standards for hygiene and sanitation, Blue Star manufactures multiple models under each product category to suit the requirements of customers across the spectrum.



## WORLD-CLASS MANUFACTURING

Blue Star's foray into manufacturing began in the 1940s from a small office in Forbes Street in Colaba, Mumbai. In the mid-1960s, we expanded our manufacturing base with a factory in Thane, Mumbai.

Today, Blue Star operates world-class manufacturing facilities at Dadra, Himachal Pradesh, Wada and Ahmedabad. With modern, state-of-the-art manufacturing technologies and equipment adhering to global quality standards and manufacturing processes, we have been delivering products of consistent quality both in India and international markets.

In all, we have a manufacturing footprint in excess of 1 lakh sq. mt. manufacturing over 300 models across 25 product lines.



Wada



Himachal Pradesh



Dadra



Ahmedabad



Wada Factory



Panel Punching Machine



## QUALITY ASSURANCE

At Blue Star, we believe that quality is not just a policy but a way of life. We are deeply committed to delivering quality products and services and are constantly looking for new ways to achieve this.

We have rigorous quality checks in place for our manufacturing process in Commercial Refrigeration. And this is backed by various certifications, registrations and compliances from internationally acclaimed bodies.

## CERTIFICATIONS

Our manufacturing facility at Wada, India has been awarded a Green Building Certification for being eco-friendly and zero polluting.

All our manufacturing facilities are also ISO 9001:2015 quality certified for the entire manufacturing and product output process.



## RESEARCH & DEVELOPMENT

Blue Star is one of the pioneers in introducing advanced technology and applications to the Indian market.

As a philosophy, we focus on Digital Technology and Sustainability, with continuous investments and focused efforts in R&D. Backed by a new-age infrastructure, we take pride in having one of the best R&D centres in the Indian Commercial Refrigeration industry. Our R&D facility is recognised by the Department of Scientific & Industrial Research (DSIR), Government of India.

The R&D division caters to our Indian and global businesses while also designing products as an original design manufacturer (ODM) for several international brands. Significant investments have been made in building performance and reliability labs, virtual modelling and virtual performance testing softwares among other technologies. Our chiller test labs are AHRI certified and NABL-accredited with regard to room air conditioners and ducted systems.

We have six registered designs and have applied for 30 patents. Our technical capabilities are recognised by the policy making departments of the Government of India, and we play a vital role in developing standards for energy efficiency and safety, representing the industry across national and international forums. In other words, R&D is always an integral part of our business.

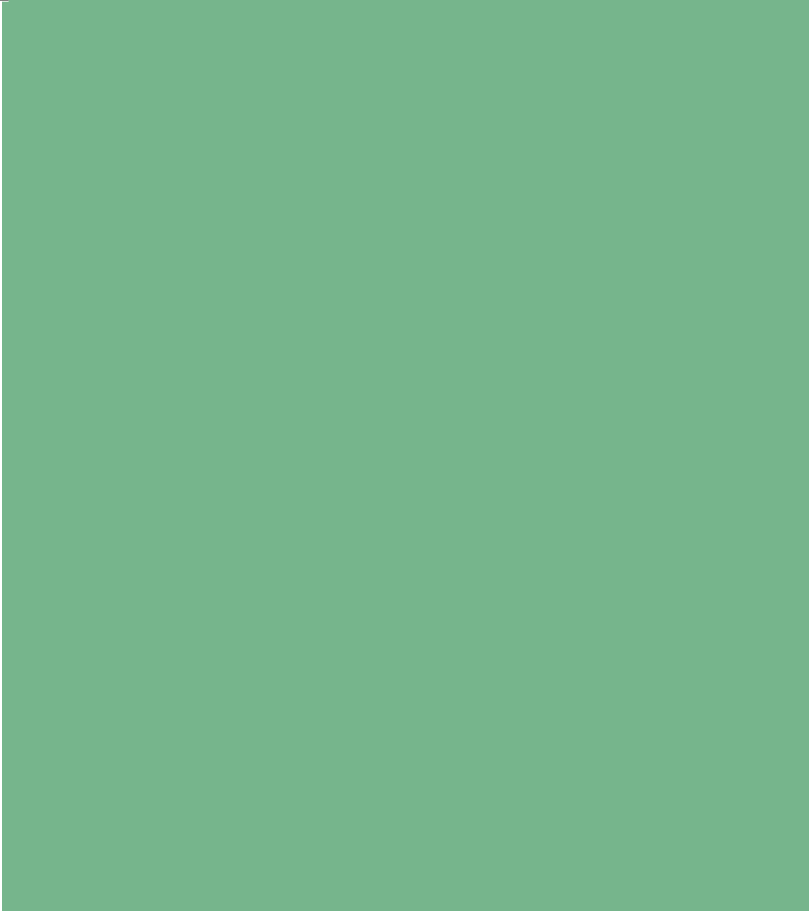




The R&D facility also has psychrometric test facilities to conduct performance tests in line with international testing standards.

## ENSURING AN EXCELLENT FINISH

Our production facilities use raw materials that meet the highest quality standards. The equipment used to process the steel includes CNC machines such as the Amada punch press, hydraulic press and specialised microprocessor-based protection and resistance welders. All these machines ensure superior quality in cabinet fabrication with high tolerances.



## AFTER-SALES SUPPORT - BLUE STAR CARE

Blue Star strives to ensure a world-class customer experience with prompt resolutions to your concerns and service requests through a cohesive network of 500+ authorized Expert Service Centres in conjunction with over 800 Sales and Service Dealers around India.

### BENEFITS OF BLUE STAR CARE



**Strong Service Network of 1000+ Centres Across India**

Blue Star Care functions across a tight-knit network of more than 500 authorized service centres across the country to ensure the promptest resolutions to your service requests.



**24 x 7 Customer Call Centre**

Simply call 1800 209 1177 or 1860 266 6666 or SMS "Service" to 57575, or mail your queries to [customerservice@bluestarindia.com](mailto:customerservice@bluestarindia.com) at any time of the day (or night). We vouch for immediate registration of complaints, a committed response as well as a resolution to your refrigeration issues.



RT  
4/7



### Unmatched Technical Competency

By employing the use of modern technology and applying the right knowledge, Blue Star Care offers expert solutions to technical issues faced with your refrigeration products.



### Service On Wheels

Blue Star Care has a fleet of 100+ service crew vehicles that make reliable after sales services easily accessible, around the country.



### Blue Star's Customer Care App For Mobile Devices

You can log a call in *just 10 seconds* with our customer care app. Our field experts then receive service requests on their mobile devices and close the service calls through a mobile app with the proper authentication from your side.



# PROFESSIONAL REFRIGERATION PRODUCTS

Whenever you want fresh to remain fresh.

Commercial refrigeration is our forte, with over thirty years of experience backing us. We have understood the market over the years and are aware that customers look for tools and instruments that are functional, efficient and versatile, the kind that can help in their daily work. So we built products that can meet their needs with ease. By offering reliable, functional and diversified products and applications, we have won their trust and confidence over the years.

## REACH-IN CHILLERS AND FREEZERS

Easy storage meets accurate temperature control.

These products are designed and tested to deliver optimum performance in harsh Indian conditions like high ambient temperature, rough usage, transportation and high humidity. Designed by Italian experts and manufactured to strict quality and production standards, these products have been tested at internationally accredited labs. The Controllers used by us are from internationally acclaimed brands. Testing is carried out to bring out the true performance of the product from various standpoints like reliability, transportation conditions to be encountered, electrical fluctuations and the entire life cycle. The stainless steel used is of food grade quality. The inner lining is made with SS304 or SS201 both which makes it safe even if food accidentally comes into contact with the inner surface. These units can also be offered with the option of SS shelves.

### FEATURES



Tropicalised for high ambient temperatures



Eco-friendly refrigerant



Food grade stainless steel unit



Odourless operation due to continuous air circulation



Uniform cooling by forced air circulation



Self-closing doors



Rounded corners



Adjustable tray slides



Auto defrost



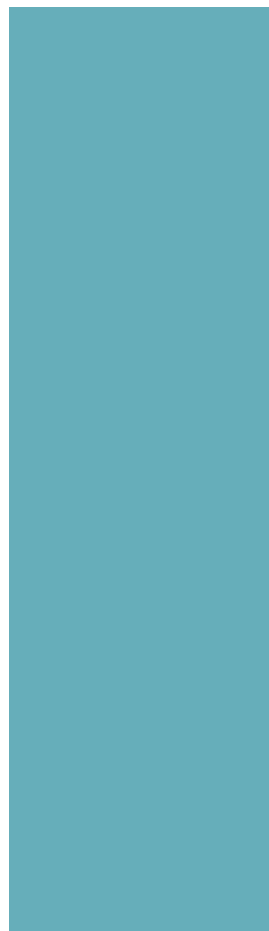
Removable gasket for easy cleaning



LED Light for visibility







## Technical Specifications

Technical Specifications - Reach-in Chillers				
Description	RF2D640E	RF2D640A	RF4D1390E	RF4D1390A
Capacity In Ltrs	600	600	1200	1300
Temperature Range	-22° ~ -18°C	-22° ~ -18°C	-22° ~ -18°C	-22° ~ -18°C
No Of Doors	2 Nos.	2 No.s	4No.s	4No.s
Shelves Qty	3 Nos.	3No.s	6No.s	6No.s
Light	No	Yes	No	Yes
Refrigerant Gas(Type/Charge)	R134a/330g	R134a/290g	R134a/320g	R134a/440g
Voltage & Frequency V - Hz	220-240V/ 50Hz	220-240V/ 50Hz	220-240V/ 50Hz	220-240V/ 50Hz
Power Watts	350	750	439	880
Current Amps	2.2	7.1	4.7	8.5
Defrost	Automatic	Automatic	Automatic	Automatic
Temperature Display Led	Yes	Yes	Yes	Yes
External Dimension(WxDxH) mm	680X755X1965	700X820X2050	1220X755X1965	1400X820X2050
Net Weight Kg	98	98	142	145
Gross Weight Kg	108	110	157	160

\* A Series : Exterior | SS201 Vs Interior | SS304

\* E Series : Exterior | SS201 Vs Interior | SS201



## Technical Specifications

Technical Specifications - Reach-in Chillers				
Description	RC2D640E	RC2D640A	RC4D1390E	RC4D1390A
Capacity In Ltrs	600	600	1200	1300
Temperature Range	2° ~ +8°C	2° ~ +8°C	2° ~ +8°C	2° ~ +8°C
No Of Doors	2No.s	2No.s	4No.s	4No.s
Shelves Qty	3No.s	3No.s	6No.s	6No.s
Light	NO	YES	NO	YES
Refrigerant Gas(Type/Charge)	R134a/250g	R134a/250g	R134a/280g	R134a/300g
Voltage & Frequency V - Hz	220-240V/ 50Hz	220-240V/ 50Hz	220-240V/ 50Hz	220-240V/ 50Hz
Power Watts	270W	322W	358W	524W
Current Amps	2A	4.5A	2.5A	4.5A
Defrost	Automatic	Automatic	Automatic	Automatic
Temperature Display Led	Yes	Yes	Yes	Yes
External Dimension(WxDxH) mm	680X755X1965	700X820X2050	1220X755X1965	1400X820X2050
Net Weight Kg	93	96	135	138
Gross Weight Kg	103	105	150	155



# UNDERCOUNTER CHILLERS AND FREEZERS

High performance comes with a heavy-duty build.

Blue Star's range of Undercounter Chillers and Freezers is ideal for storing pre-mixes and preparation materials. This range comes with an auto door-close mechanism and uses food grade stainless steel to keep food fresh.

These Undercounter Chillers and Freezers provide precise temperatures, are designed aesthetically and built for heavy-duty use.

Also available in the Undercounters range are Pizza Tables, Saladette Range, Sandwich Stations and Chilled Topping Units.

## FEATURES



Tropicalised for  
high ambient temperatures



Eco-friendly refrigerant



Food grade  
stainless steel unit



Odourless operation due to  
continuous air circulation



Uniform cooling by  
forced air circulation



Self-closing doors







## FEATURES



Rounded corners



Adjustable tray slides



Auto defrost



Removable gasket for easy cleaning



Digital temperature indicator



Door options : stainless steel / glass



Adjustable feet





## Technical Specifications

BSL Name	UC2100A	UC3100A	UC2100E	UC3100E	UC3190EDR	UC2160EDR
Capacity In Ltrs	260	410	260	400	400	260
Temperature Range °C	2° ~ +8°C	2° ~ +8°C	2° ~ +8°C	2° ~ +8°C	2° ~ +8°C	2° ~ +8°C
No. Of Doors	2 No.s	3 No.s	2 No.s	3 No.s	9 DRAWERS	6 DRAWERS
Type Of Doors	SS/Glass	SS/Glass	SS/Glass	SS/Glass	SS	SS
Shelves Qty	2 No.s	3 No.s	2 No.s	3 No.s	9 DRAWERS	6 DRAWERS
Gn Pan	GN2/1	GN2/1	GN2/1	GN2/1	NA	NA
Refrigerant Gas(Type/Charge)	R134a/245g	R134a/245g	R134a/260g	R134a/260g	R134a/260g	R134a/260g
Voltage Supply & Frequency V - Hz	220/240V - 50Hz	220/240V - 50Hz	220/240V - 50Hz	220/240V - 50Hz	220/240V - 50Hz	220/240V - 50Hz
Max Input Power	340W	340W	350W	350W	350W	350W
Current Amps	1.97A	1.97A	2.2A	2.2A	2.2A	2.2A
Defrost	Automatic	Automatic	Automatic	Automatic	Automatic	Automatic
Thermostat	Digital	Digital	Digital	Digital	Digital	Digital
External Dimension(WxDxH) mm	1380X700X850	1815X700X850	1350x700x850	1800x700x850	1800x700x850	1350x700x850
Net Weight Kg	112	135	100	124	160	124
Gross Weight Kg	136	159	118	149	185	142



## Technical Specifications

BSL Name	UF2100A	UF3100A	UF2100E	UF3100E
Capacity In Ltrs	260	410	260	400
Temperature Range °C	-22° ~ -18°C	-22° ~ -18°C	-22° ~ -18°C	-22° ~ -18°C
No. Of Doors	2 No.s	3 No.s	2 No.s	3 No.s
Type Of Doors	SS/Glass	SS/Glass	SS/Glass	SS/Glass
Shelves Qty	2 No.s	3 No.s	2 No.s	3 No.s
Gn Pan	GN2/1	GN2/1	GN2/1	GN2/1
Refrigerant Gas(Type/Charge)	R404a/290g	R404a/290g	R404a/300g	R404a/350g
Voltage Supply & Frequency V - Hz	220/240V - 50Hz	220/240V - 50Hz	220/240V - 50Hz	220/240V - 50Hz
Max Input Power	560W	565W	335W	532W
Current Amps	3.5A	3.6A	2.3A	4.4A
Defrost	Automatic	Automatic	Automatic	Automatic
Thermostat	Digital	Digital	Digital	Digital
External Dimension(WxDxH) mm	1380X700X850	1815X700X850	1350x700x850	1800x700x850
Net Weight Kg	116	138	113	150
Gross Weight Kg	140	162	121	175



# SALADETTES AND SANDWICH STATIONS

Blue Star now introduces Saladettes and Sandwich Stations to its range of products. They are built from stainless steel on the interior as well as exterior to lend great aesthetic appeal and to differ from other models available in the market. A definite boost to the eatery business!

## FEATURES



Easy serviceability



Adjustable feet



High efficiency and functionality



Removable gasket



Green refrigerant



Cyclopentane blowing agent



Self-closing doors



45mm thick insulation



Curved edge for easy cleaning



Digital temperature control



Automatic defrost

## Technical Specifications

Bsl Name	SC2100B	SC3100B	SC2100A	SC3100A
Capacity In Ltrs	214	342	239	389
No. Of Doors	2 No.s	3 No.s	2 No.s	3 No.s
Type Of Doors	Stainless Steel	Stainless Steel	Stainless Steel	Stainless Steel
Temperature Range °C	2° ~ +8°C	2° ~ +8°C	2° ~ +8°C	2° ~ +8°C
Shelves Qty	2 No.s	3 No.s	2 No.s	3 No.s
Gn Pan	GN2/1	GN2/1	GN2/1	GN2/1
Toppins Pan Slot	NA	NA	YES	YES
Refrigerant Gas(Type/Charge)	R600a/88g	R290/110g	R600a/88g	R290/110g
Voltage Supply & Frequency V - Hz	220/240V - 50Hz	220/240V - 50Hz	220/240V - 50Hz	220/240V - 50Hz
Max Input Power	143W	230W	143W	230W
Current Amps	1.1A	1.49A	1.1A	1.49A
Defrost	Automatic	Automatic	Automatic	Automatic
Thermostat	Digital	Digital	Digital	Digital
External Dimension(WxDxH) mm	900x700x880	1365X700X880	900X700X1005	1365X700X1005
Net Weight Kg	87	106	84	112
Gross Weight Kg	100	132	103	143









# BLAST FREEZERS

Blue Star offers a new range of Blast Freezers ideal for extremely fast chilling needs. These freezers help eliminate contamination from bacteria and maintain the quality of food products. A must-have product for any kitchen, they also prevent any weight loss of food products.

## FEATURES



Internal /external construction made of stainless steel AISI 304



Tropicalised for Indian conditions



Automatic defrosting system with pause



Electronic temperature display



High performance



Time and probe based chiller and freezer temperature setting



## Technical Specifications

BSL Name	BF05F	BF07F	BF10F	BF15F
COOLING TYPE	CHILLER & FREZEER	CHILLER & FREZEER	CHILLER & FREZEER	CHILLER & FREZEER
CHILLING VOLUME IN Kg	20	25	30	35
FREEZING VOLUME IN Kg	15	20	25	30
PHASE	SINGLE	SINGLE	SINGLE	THREE
CHILLING TEMP °C	+90 / +3°C	+90 / +3°C	+90 / +3°C	+90 / +3°C
FREEZING TEMP °C	+90 / -18°C	+90 / -18°C	+90 / -18°C	+90 / -18°C
PROP	1No.s	1No.s	1No.s	1No.s
DEFROST	AUTOMATIC	AUTOMATIC	AUTOMATIC	AUTOMATIC
TEMPERATURE DISPLAY LED	DIGITAL	DIGITAL	DIGITAL	DIGITAL
DOOR	SOLID DOOR	SOLID DOOR	SOLID DOOR	SOLID DOOR
VOLTAGE SUPPLY & FREQUENCY V - Hz	220V / 50 Hz	220V / 50 Hz	220V / 50 Hz	380V / 50 Hz
MAX INPUT POWER	1000W	1200W	2000W	3500W
REFRIGERANT GAS(TYPE/CHARGE)	R404a/1000g	R404a/1000g	R404a/1200g	R404a/3000g
SHELF	5 GN 1/1	7 GN 1/1	10 GN 1/1	15 GN 1/1
EXTERNAL DIMENSION(WxDxH) mm	800x750x850	800x750x1210	800x750x1390	800x850x2000
NET WEIGHT Kg	80	110	140	180
GROSS WEIGHT Kg	100	130	164	200
GROSS WEIGHT Kg	76	112	168	185



## Technical Specifications

BSL Name	BF03G	BF05G	BF10G	BF15G
COOLING TYPE	CHILLER & FREEZER	CHILLER & FREEZER	CHILLER & FREEZER	CHILLER & FREEZER
CHILLING VOLUME IN Kg	10	18	34	50
FREEZING VOLUME IN Kg	7	11	22	38
PHASE	SINGLE	SINGLE	SINGLE	THREE
CHILLING TEMP °C	+90°C / +3°C	+90°C / +3°C	+90°C / +3°C	+90°C / +3°C
FREEZING TEMP °C	+90°C / -18°C	+90°C / -18°C	+90°C / -18°C	+90°C / -18°C
PROP	1No.s	1No.s	1No.s	1No.s
DEFROST	AUTOMATIC	AUTOMATIC	AUTOMATIC	AUTOMATIC
TEMPERATURE DISPLAY LED	DIGITAL	DIGITAL	DIGITAL	DIGITAL
DOOR	SOLID DOOR	SOLID DOOR	SOLID DOOR	SOLID DOOR
VOLTAGE SUPPLY & FREQUENCY V - Hz	230V/50Hz	230V/50Hz	230V/50Hz	400V/50Hz
MAX INPUT POWER	975W	1185W	2010W	3820W
REFRIGERANT GAS(TYPE/CHARGE)	R404a/500g	R404a/850g	R404a/1600g	R404a/2400g
SHELF	3 GN1/1	5 GN1/1	10 GN1/1	15 GN1/1
EXTERNAL DIMENSION(WxDxH) mm	650x670x670	800x700x900	800x780x1700	800x780x2000
NET WEIGHT Kg	65	92	145	175
GROSS WEIGHT Kg	76	112	168	185



## BACK BAR CHILLER

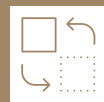
Blue Star offers Back Bar Chiller options that can be used at any bar, club and/or restaurant. With glass doors, they provide excellent visibility and are designed to save space. Storage in these chillers ensures great preservation and convenient, ready-to-serve drinks.



## FEATURES



Self-closing doors



Replaceable gasket



Internal LED light for better visibility



Adjustable shelves and feet



Lock fitted as standard



Safety tempered glass and double glazed doors



Digital temperature control



## Technical Specifications

<b>BSL Name</b>	<b>BC250A</b>	<b>BC350A</b>
CAPACITY in Ltrs	190	300
COOLING TYPE	VENTILATED	VENTILATED
NO. OF DOORS	2 No.s	3 No.s
TYPE OF DOORS	GLASS DOOR	GLASS DOOR
TEMPERATURE RANGE °C	1 ~ +10°C	1 ~ +10°C
SHELVES QTY/COLOUR/ADJUSTABLE	4 / WHITE	6 / WHITE
REFRIGERANT GAS(TYPE/CHARGE)	R600a/70g	R290/90g
VOLTAGE SUPPLY & FREQUENCY V - Hz	220-240V/50Hz	220-240V/50Hz
MAX INPUT POWER	210W	345W
DEFROST	AUTOMATIC	AUTOMATIC
EXTERNAL DIMENSION(WxDxH) mm	900X520X865	1350X520X865
NET WEIGHT Kg	57.5	82
GROSS WEIGHT Kg	62	87.5







# ICE MACHINES

Ice of any shape. For any occasion.

Ice has diverse usage. A style element for cocktail drinks. A cool bedding for delicacies. A preserver of life saving drugs. This list is as long as it is diverse. And to meet your specific usage requirements of ice in the best possible way, you can always rely on the expert, Blue Star.

## Why Blue Star?

Blue Star, India's leading refrigeration company, collaborates with NTF (Italy), the world's leading ice machines manufacturer, to bring new sophisticated ice-making machines. These machines are hygienic, energy efficient, durable and easy to maintain. Our expertise and domain knowledge give you products according to your requirements. And our extensive service network ensures your machine performs optimally and lives long.

## FEATURES



Power saving design



Auto stop and start



Perfectly shaped ice



Equipped with sprayers for easy cleaning



Water content control



Compact design saves space



Stainless steel body for longer life

## Diced Ice Makers

Keep your cocktails cool for a long time with our Diced Ice Makers. The cut cone shaped ice cubes are crystalline, compact and come with a higher staying power.



## Bullet Ice Makers

Here's another option to cool your drinks perfectly. These Bullet Ice Makers quickly and efficiently produce hollow, bullet shaped ice. The bullet's soft touch, smooth surface and maximum cooling surface make it perfect for all kinds of drinks. What's more, it is capable of dealing with even the most hard water and provides a timer to gauge the entire production cycle.



## Pyramid Ice Makers

Stylish to look at and quick to chill, our Pyramid Ice Makers produce seven-faceted pyramid ice that offers a refreshing break from the routine. It turns fizzy drinks into a chilled treat. What's more, these machines can produce great quantities of ice in a short span.



## Technical Specifications

Model Name	SL35AG	SL60AG	SL90AG	SL180AG	SL260AG	SL350AG	CM650A
Type	Ice Cuber	Ice Cuber	Ice Cuber	Ice Cuber	Ice Cuber	Ice Cuber	Ice Cuber
Production In 24 Hrs	20Kg	32 Kg	46 Kg	88 Kg	100 Kg	155 Kg	300 Kg
Storage Capacity ( Kg )	4 Kg	9 Kg	25 Kg	40 Kg	60 Kg	65 Kg	Bin Separate
Cube Size	14 g	14-17-32-41 g	14-17-32-41 g	14-17-32-41 g	14-17-32-41 g	14-17-32-41-60 g	14-17-32-41-60 g
Voltage / Frequency / Phase	230V ~ 50 Hz -1 Ph	230V ~ 50 Hz -1 Ph	230V ~ 50 Hz -1 Ph	230V ~ 50 Hz -1 Ph	230V ~ 50 Hz -1 Ph	230V ~ 50 Hz -1 Ph	230V ~ 50 Hz -1 Ph
Inlet Water Temp °C	+15°C	+15°C	+15°C	+15°C	+15°C	+15°C	+15°C
Power Input (Watt)	320	350	450	800	850	1400	2600
Cooling System	Air-Cooled	Air-Cooled	Air-Cooled	Air-Cooled	Air-Cooled	Air-Cooled	Air-Cooled
Dimension (W X D X H) mm	355 x 404 x 590	387 X 465 X 687	497 X 592 X 797	735 x 603 x 907	735 X 603 X 1007	840 X 740 X 1075	1250 X 580 X 848
Net Weight ( Kg )	30	38	52	71	74	118	152

## Technical Specifications

MODEL NAME	IFT 65	IFT 165
Type	Bullet Ice	Bullet Ice
Production In 24 Hrs	35Kg	75Kg
Storage Capacity ( Kg )	15Kg	30Kg
Cube Size	20 g	20 g
Voltage / Frequency / Phase	230V ~ 50 Hz -1 Ph	230V ~ 50 Hz -1 Ph
Inlet Water Temp °C	+15°C	+15°C
Power Input (Watt)	310	480
Cooling System	Air-Cooled	Air-Cooled
Dimension (W X D X H) mm	495 X 580 X 687	735 X 596 X 907
Net Weight ( Kg )	47	75

## Technical Specifications

Model Name	CV 475	CV 950	CV 1650
Type	DICE	DICE	DICE
Production In 24 Hrs	200Kg	400Kg	770Kg
Cube Size	7 g	7 g	7 g
Voltage / Frequency / Phase	230V ~ 50 Hz -1 Ph	230V ~ 50 Hz -1 Ph	400V ~ 50 Hz -3 Ph
Inlet Water Temp °C	+15°C	+15°C	+15°C
Power Input (Watt)	1600	3000	4300
Cooling System	Air-Cooled	Air-Cooled	Air-Cooled
Dimension (W X D X H) mm	770 X 550 X 805	770 X 550 X 805	1250 X 645 X 950
Net Weight ( Kg )	90	113	186



## Snow Maker

Make a cool bedding for your delicacies or cool your drinks instantly with snow flakes made with our Snow Maker.



### Technical Specifications

Model Name	SM 1750	SM 4500
Type	Snow	Snow
Production In 24 Hrs	900Kg	2300Kg
Voltage / Frequency / Phase	400V ~ 50 Hz -3 Ph	400V ~ 50 Hz -3 Ph
Inlet Water Temp °C	+15°C	+15°C
Power Input (Watt)	4600	7000
Cooling System	Air-Cooled	Air-Cooled
Dimension (W X D X H) Mm	1107 X 700 X 880	1062 X 832 X 1423
Net Weight ( Kg )	241	520



## Ice Flaker

Our Ice Flaker produces flat, sub-cooled flakes. Flakes are simple to store, handle and dose. And their superior staying power makes them ideal for processing, transportation and storage of food items.



### Technical Specifications

MODEL NAME	SLF 190	SLF 320	GM 1200	GM 2000
Type	Ice Flake	Ice Flake	Ice Flake	Ice Flake
Production In 24 Hrs	95Kg	155Kg	510Kg	1000Kg
Storage Capacity ( Kg )	19Kg	38Kg	Na	Na
Voltage / Frequency / Phase	230V ~ 50 Hz -1 Ph	230V ~ 50 Hz -1 Ph	230V ~ 50 Hz -1 Ph	400V ~ 50 Hz -3 Ph
Inlet Water Temp °C	+15°C	+15°C	+15°C	+15°C
Power Input (Watt)	550	650	1700	3200
Cooling System	Air-Cooled	Air-Cooled	Air-Cooled	Air-Cooled
Dimension (W X D X H) mm	496 X 660 X 685	741 X 678 X 925	560 X 569 X 695	934 X 684 X 700
Net Weight ( Kg )	59	85	102	167



# STORAGE WATER DISPENSER - PLATINUM SERIES

Hot, Cold & Room Temperature Water

Blue Star introduces a new range of Storage Water Dispenser - Platinum Series. The first of its kind in India, these dispensers come with an in-built hot water faucet. They also dispense Cold Water and Room Temperature Water along with the option of UV & RO+UV purification. The Platinum Series is the one stop solution for all drinking water requirements.

## FEATURES



Smart and ergonomical design



Cold/room temperature water



Hot water faucet with child lock



LED display



UV & RO+UV purification



Faster cooling



Eco-friendly refrigerant



In-situ power saving PUF insulation





Sturdy Compressor for trouble free operation



Nationwide Blue Star network for prompt service



Last point purification



Electronic eye



Fully automatic



Food grade SS Tank



PP outer body



Smart logic and troubleshooting



## Technical Specifications

	Description	P6080E-SL	P6080UVE-SL	P6080UVROE-SL
Performance Parameters	Storage Capacity (L)	80 ltr	80 ltr	80 ltr
	Capacity with Comfort Level Water Outlet Temp at 18°C at Rated Condition (L/hr)	60 LPH	60 LPH	60 LPH
	Storage Capacity - Cold	65	65	65
	Storage Capacity - Ambient	15	15	15
	Storage Capacity - Hot	2	2	2
	Total Running Current (A)	7.5	10	12.5
	Total Power (W)	1575	1630	1700
	Thermal Insulation for Tank	PUF	PUF	PUF
	No. of Faucets (Cold/Hot/Plain)	1/1/1	1/1/1	1/1/1
Filtration Stages	No. of Stages for Filter-cum-Purifier	-	1) Pre-Filtration 2) Pre-Carbon 3) Post-Filtration	1) Pre-Filtration 2) Pre-Carbon 3) Post-Filtration 4) RO 5) Post-Carbon"
UV	UV Purification	-	Yes, Last Stage	Yes, Last Stage
RO System	RO Membrane Rating (L/hr)	-	-	400
	RO Membrane Operating Temperature	-	-	15°C to 45°C
	RO Membrane Flushing	-	-	Every 12 hours
	RO System and Water Cooler Operating Voltage	-	-	220-240 V
Body	Storage Tank Material	SS304	SS304	SS304
	Outer Body Material	Pre Painted Sheet	Pre-Painted Sheet	Pre-Painted Sheet
	Type of Product Construction	Concealed	Concealed	Concealed
	Type of Installation	Indoor	Indoor	Indoor
	Top Lid Type	Hinged	Hinged	Hinged
Dimensions and Net Weight	Dimension (W x D x H) mm	660 x 575 x 1575	660 x 575 x 1575	660 x 575 x 1575
	Net Weight (Kg)	55	63	69
	Refrigerant	R134a	R134a	R134a
	Colour Options	Silver	Silver	Silver



# WATER COOLERS

Cools water surprisingly fast.

Blue Star offers you a range of water coolers that provide cool water in no time. Perfect for schools, colleges, offices and places where the consumption of water is frequent and high, these water coolers come with several features that give you great value for money.

## Unmatched Features of Blue Star Water Coolers



Faster cooling



Eco-friendly



In situ power-saving PUF insulation



Sturdy compressor and trouble-free operation



Silent operation



Nationwide Blue Star network for prompt service



Food grade SS tank and body

SS

### Stainless Steel Body

Your water cooler will look new and attractive even after years of use. No rusting, no corrosion.

SS

### Stainless Steel Tank

For safe drinking water, year after year.



### Easy Controls

The externally mounted thermostat makes it easy to set water temperature. No need to open service panels.

XL

### Speedy Drainage

The extra large, stainless steel water tray prevents splashing and ensures fast drainage of water.



## Technical Specifications

Model	Nominal Cooling Capacity (Litres/hr)	Storage Capacity (Litres)	No. of Faucets	Dimensions (mm)			Weight (kg)	Normal Demand (glasses per hr.)	Refrigerant	Current (Amps)	Water Overflow (Connections)	"Type of Compressor"
				Width	Depth	Height						
SDLX2020-ET	20	20	1	400	400	1060	30	100	R134a	2	1/2 BSP	RECIP
SDLX240	20	40	1	440	440	1185	47	100	R134a	2	1/2 BSP	RECIP
SDLx4080B	40	80	2	665	485	1210	65	200	R134a	2.5	1/2 BSP	RECIP
SDLx6080B	60	80	2	665	485	1210	65	300	R134a	3	1/2 BSP	RECIP
SDLX80120B	80	120	2	755	575	1240	77	400	R134a	3.8	1/2 BSP	RECIP
SDLX150150B	150	150	2	812	612	1210	95	750	R22	8.1	1/2 BSP	ROTARY
SDLX100	170	380	4	1140	770	1500	125	850	R22	8	1/2 BSP	ROTARY

Model	Nominal Cooling Capacity (Litres/hr)	Storage Capacity (Litres)	No. of Faucets	Dimensions (mm)			Weight (kg)	Normal Demand (glasses per hr.)	Refrigerant	Current (Amps)	Water Overflow (Connections)	"Type of Compressor"
				Width	Depth	Height						
PC240	20	40	1P+1C	440	440	1185	47	100	R134a	2	1/2 BSP	RECIP
PC4080B	40	80	1P+1C	665	485	1210	65	200	R134a	2.5	1/2 BSP	RECIP
PC15150-3T	150	150	1P+2C	812	612	1210	95	750	R22	8.1	1/2 BSP	ROTARY

Model	Nominal Cooling Capacity (Litres/hr)	Storage Capacity (Litres)	No. of Faucets	Dimensions (mm)			Weight (kg)	Normal Demand (glasses per hr.)	Refrigerant	Current (Amps)	Water Overflow (Connections)	"Type of Compressor"
				Width	Depth	Height						
NST2020	20	20	1	400	485	1060	43	100	R134a	2	1/2 BSP	RECIP
NST6080B	60	80	2	665	485	1210	65	300	R134a	2.5	1/2 BSP	RECIP
NST80120B	80	120	2	755	575	1240	77	400	R134a	3.8	1/2 BSP	RECIP
NST170150	170	150	2	812	612	1210	95	750	R22	8.1	1/2 BSP	ROTARY



Purifies cool water just  
before you drink it.



# WATER COOLERS WITH IN-BUILT UV PURIFICATION

## Now Enjoy Cold Drinking Water that is 100% Pure Too!

Blue Star is already a leader in the storage water cooler market, and we now bring you storage water coolers with an in-built purification and filtration process, that not only supplies non-stop cold water, but also ensures its purity for safe consumption. The technology and design are so well put together that they give you last-point purification. This prevents contamination even post the filtration stage and ensures safe drinking water at the faucet.

Impure drinking water is one of the main sources of infection, even mild poisoning in many cases. Hence, it is important to build purification processes into the water system. Our water coolers incorporate everything that is required – reliable cooling systems, purification and contaminant filtration – all within the same housing, integrating all systems for seamless, efficient operation. They are therefore comprehensive and compact solutions for safe, clean and cold drinking water.

## Proven Filtration Techniques for the Purest Water



### UV Purification

UV filters, using robust and reliable technology, ensure contamination-free, safe drinking water.



### Multiple Stages of Filtration

Besides the UV stage, various other filters ensure clean, odourless, tasty drinking water.



### Last-point Purification

Innovative design, using proven last-point UV technology, ensures that filtered water is not exposed to further contamination before delivery at the faucet.



### Electronic Eye

Monitors purification process and stops water flow if the purification is inadequate.



### Faster Cooling

Efficient design, including the rectangular tank and forced fin and tube condenser, maximises heat transfer and ensures faster cooling.



### Lower Power Consumption

Consumes less power as compared to equivalent models due to its smart design.



### High Throughput

Large tank and the overall system designed for high consumption volumes.



### Longer Life

Non-corrosive SS outer body ensures longer life, brighter looks and smoother finish, while rugged plastic legs reduce corrosion of base.



### Contamination-free Storage

Food grade SS 304 stainless steel inner tank keeps the stored water contamination-free.



### Space Saving

Compact design saves precious real estate.



### Reliability

Reciprocating compressor can operate under tough ambient conditions for long hours. And in case of failure, it can be repaired in most cases thus lowering maintenance costs.



### Ease of Service

Thoughtfully designed so that all important components are individually and separately accessible for easy service and maintenance.





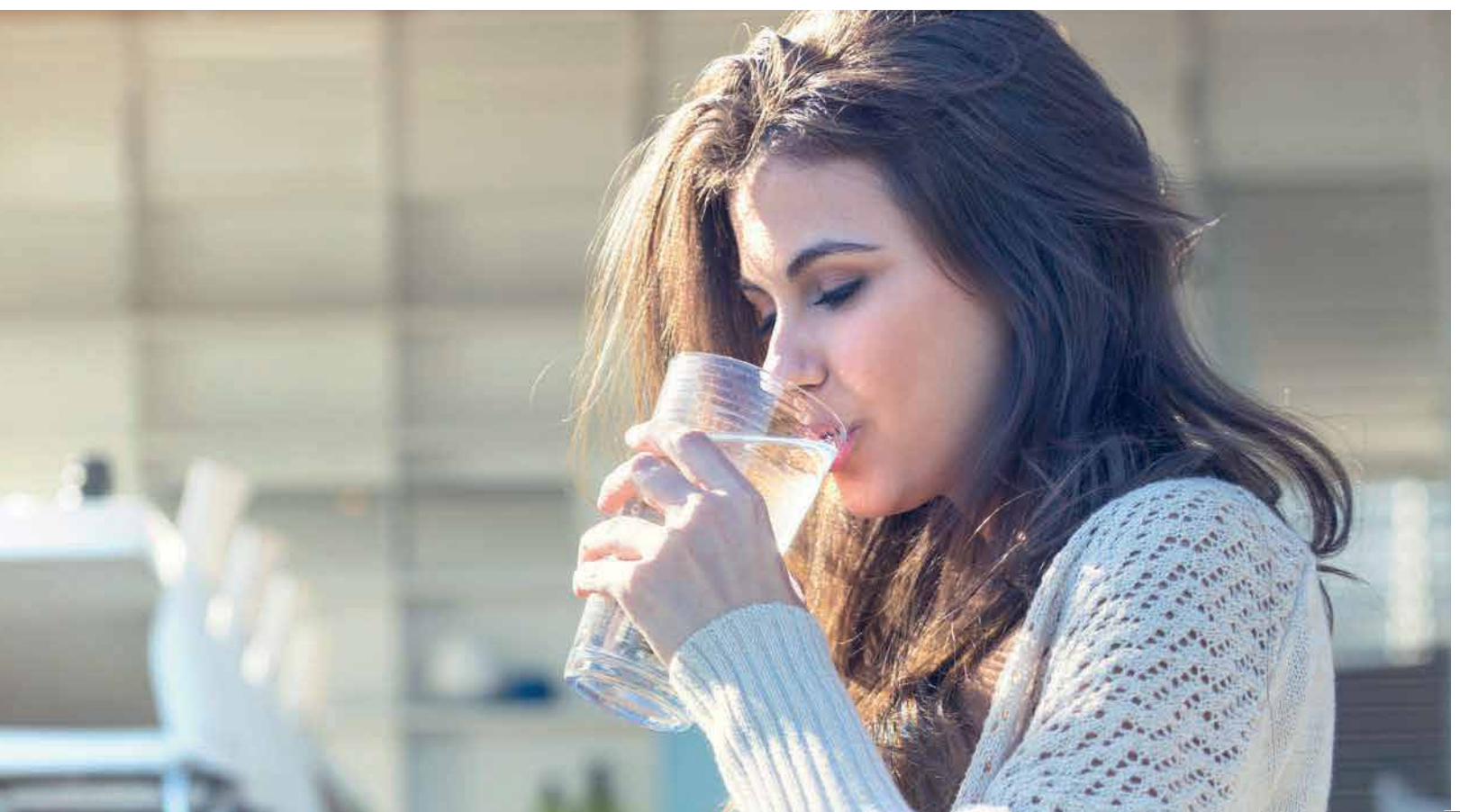
## Blue Star Water Coolers with UV Purification

Ultraviolet (UV) rays are proven to be effective in killing harmful bacteria and microbes that may be present in drinking water. At the same time, the treated water retains all its minerals and salts.

This is why our water coolers use ultraviolet radiation as a pre-treatment to sterilise and disinfect the water before it is available at the faucet.

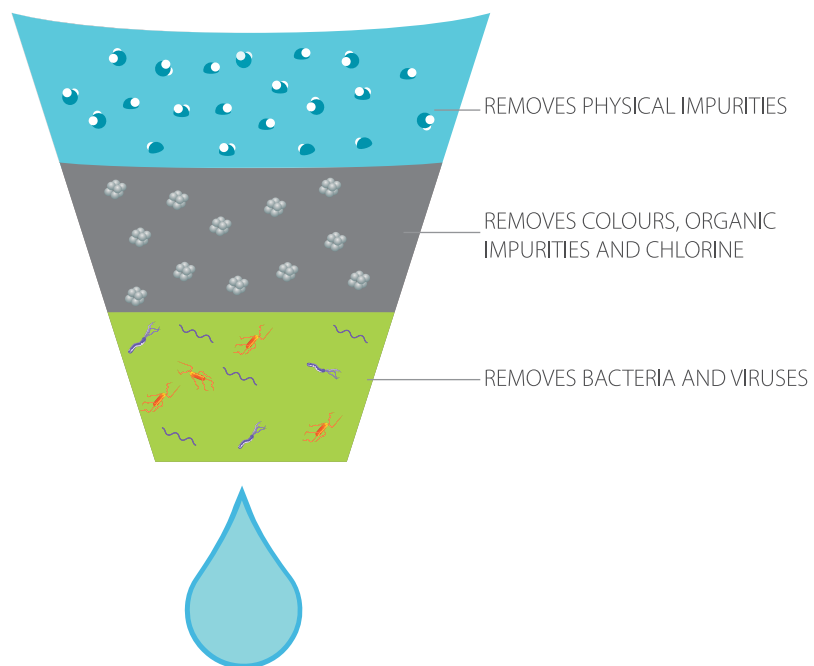
These coolers also come with a further two-step filtering process that removes physical impurities, colour, organic impurities and chlorine from the water before it is dispensed.

A unique feature of these coolers is the last-point purification that uses UV technology to ensure that the water dispensed remains pure and uncontaminated even during the post-filtration flow.



## Unique 3-stage Purification Process

- Unique polypropylene yarn candle to remove physical impurities from input water.
- Activated carbon cartridge for removing colour, organic impurities and chlorine.
- UV disinfection chamber to disinfect waterborne disease-causing bacteria and viruses.



## Technical Specifications

	Description	SWCSDLX6080UVE	SWCNST80120UVE
Performance Parameters	Storage Capacity (up to float valve level)	80 Ltr	120 Ltr
	Capacity with Comfort Level Water Outlet Temp at 17°C ± 1°C at Rated Condition	60 LPH	80 LPH
	Running Current In AMPS (max) at Rated Condition	3.2 ± 10%	4 ± 10%
	Power in Watts (max) at Rated Condition	625 ± 10%	825 ± 10%
	Operating Power Supply	230 ± 10% V AC, 50Hz, 1 PH	
	Thermal Insulation for Storage Tank	PUF	
	No. of Faucets	2	3
	No. of Cold Water Faucets	1	2
	No. of Normal Water Faucets	1	
Filtration Stages	No. of Stages	3	
	1st stage of Purification	Sediment Filtration	
	2nd stage of Purification	Carbon Filtration	
	3rd stage of Purification	UV Filtration	
	No. of Purifier Circuit	2	3
	Visual Controls (LEDs)	Yes	
	Cooling On / Off Switch	Yes	
	Operating Temperature	15°C to 45°C	
UV System	UV System & Water Cooler Operating Voltage	180 - 250V	
	Minimum Water Input Pressure in Kg/mm <sup>2</sup>	0.4	
	Maximum Water Input Pressure in Kg/cm <sup>2</sup>	2	
Body	Storage Tank Material	SS304	
	Front Panel Material	SS304	
	Side & Back Panel Material	SS304	Pre Coated Sheet
Dimensions and Net Weight	Dimensions (W x D x H) mm	660 x 480 x 1355	752 x 572 x 1400
	Net Weight (Kg)	65	85
Refrigerant	Refrigerant	R134a	



Pure, cool goodness  
in every drop.



# WATER COOLERS WITH IN-BUILT RO + UV PURIFICATION

Proven Filtration Techniques for the Purest Water

## Unbeatable Features and Benefits

**RO**

### RO Purification

RO filters using robust and reliable technology ensure contamination-free, safe drinking water.



### 7 Stages of Filtration

Besides RO, various other filters ensure clean, odourless, tasty and cool drinking water.

**A**

### Fully Automatic

Starts or stops when the tank is half empty or full.



### Faster Cooling

Efficient design, including rectangular tank and forced fin and tube condenser, maximises heat transfer and ensures faster cooling.



### Lower Power Consumption

Consumes less power as compared to equivalent models due to its smart design.



### High Throughput

Large tank and overall system designed for high consumption volumes.



### Longer Life

Non-corrosive SS outer body ensures longer life, brighter look and smoother finish, while rugged plastic legs reduce corrosion of base.





### Contamination-free Storage

Food grade SS 304 stainless steel inner tank keeps the storage water contamination-free.



### Cold Water Even Through Power Cuts

In-situ PUF insulation not only reduces power consumption but ensures that the water remains cool even through long power failures.



### Space Saving

Compact design saves precious real estate.



### Reliability

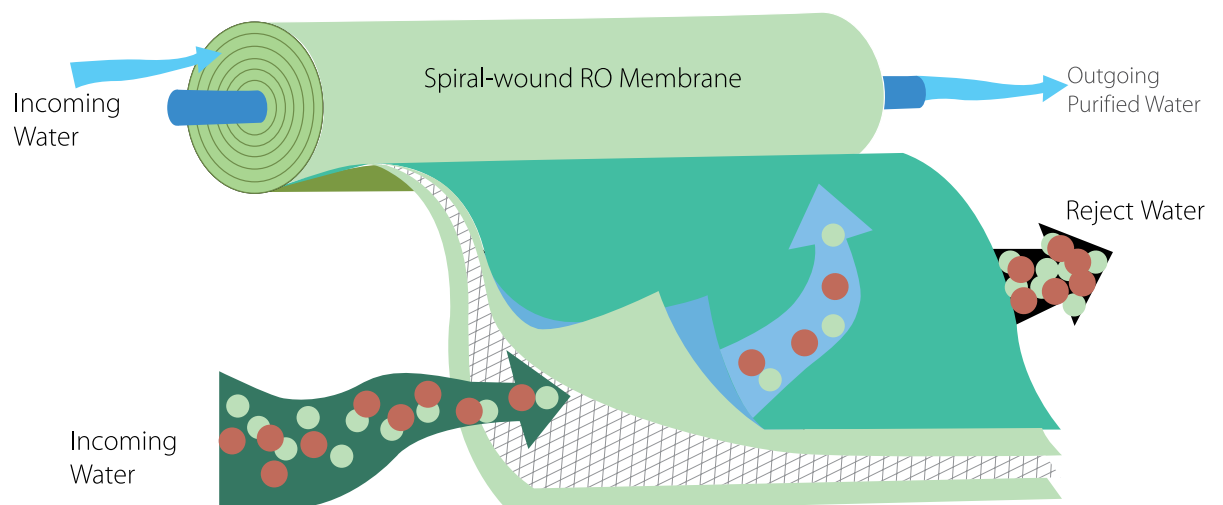
Reciprocating compressor can operate under tough ambient conditions for long hours. And in case of failure, it can be repaired in most cases thus lowering maintenance costs.



### Ease of Service

Thoughtfully designed so that all important components are individually and separately accessible for easy service and maintenance.

## Unique 7-stage Purification Process



- Unique polypropylene yarn candle to remove physical impurities from input water
- Specially treated pre-carbon block for absorbing colour, organic impurities and chlorine
- Anti-scalant filters to prevent deposits over the RO membrane
- The sediment filter traps all the fine sediments present in the input water
- RO membrane filter (porosity of .0001 micron) strains micro-organisms and TDS from the input water
- Post-carbon filter to enhance the taste of purified water
- Nano-silver leaching effectively prevents microbial contamination in the storage tank

## Technical Specifications

	Description	SWCSDLX6080UVROE
Performance Parameters	Storage Capacity (up to float valve level)	80 Ltr
	Capacity with Comfort Level Water Outlet Temp at 17°C ± 1°C at Rated Condition	60 LPH
	Running Current In AMPS (max) at Rated Condition	4.5 ± 10%
	Power in Watts (max) at Rated Condition	700 ± 10%
	Operating Power Supply	230 ± 10% V AC, 50Hz, 1 PH
	Thermal Insulation for Storage Tank	PUF
	No. of Faucets	2
	No. of Cold Water Faucets	2
	No. of Normal Water Faucets	NA
Filtration Stages	No. of Stages for Filter cum Purifier	7
	1st stage of Purification	Sediment Purification
	2nd stage of Purification	Carbon Block Purification
	3rd stage of Purification	Anti-Scalant Purification
	4th stage of Purification	Sediment Purification
	5th stage of Purification	Reverse Osmosis Membrane Purification (2 per circuit)
	6th stage of Purification	Post-Carbon Block Filtration
	7th stage of Purification	Nano-Silver Leaching Filtration
	UV Purification	Yes
RO System	RO Membrane Rating	4 x 75 GPD or equivalent
	% of Purified Water Recovery	25%, 50 LPH
	% Rejection of TDS	75%
	Operating Temperature	15° C to 45° C
	RO Membrane Flushing	Auto-Flush at Every Start, Every Stop and Every One Hour for 1 Minute
	RO System & Water Cooler Operating Voltage	180 - 250V
Body	Storage Tank Material	SS304
	Outer Body Material	SS304
	Type of Product Construction	Concealed
Dimensions and Net Weight	Type of Installation	Indoor
	Dimensions (W x D x H) mm	660x480x1355
	Net Weight (Kg)	73
Refrigerant	Refrigerant	R134a



		Top loading Series - A		
Description	Model Type	BWD3TTGA	BWD3FMCGA	BWD3FMRGA
Model		Dispenses Hot/ Cold/ Ambient Water	Dispenses Hot/ Cold/ Ambient Water	Dispenses Hot/ Cold/ Ambient Water
Performance Parameters	Display	LED	LED	LED
	Refrigerator/ cabinet Capacity (Ltr.)	NA	15 ltr	15 ltr
	Voltage / Frequency / Phase	230V / 50Hz / Single	230V / 50Hz / Single	230V / 50Hz / Single
	Tank Specification	SS 304 Food Grade	SS 304 Food Grade	SS 304 Food Grade
Cooling Features	Cooling Storage Capacity (Ltr.)	3.2	3.2	3.2
	Cooling Capacity (Ltr. / Hour) at 12°C Discharge	2.5	2.5	2.5
	Power Consumption (Watt) ~ Cooling	80 W	80 W	86 W
Heating Features	Hot tank Storage Capacity (Ltr.)	0.9	0.9	0.9
	Heating Capacity (Ltr. / Hour) at 83°C Discharge	5	5	5
	Power Consumption (Watt) ~ Heating	500	500	500
Other Features	Drip Tray	Yes	Yes	Yes
	Faucet Type	Push Type/Child Lock for Hot Tap	Push Type/Child Lock for Hot Tap	Push Type/Child Lock for Hot Tap
	No of Faucets	3	3	3
	Refrigerant	R134a	R134a	R134a
Dimensions & Net Weight	Dimensions (W x D x H) mm	310 x 345 x 490	310 x 345 x 940	310 x 345 x 940
	Net weight (Kg)	12	14	17



# BOTTLED WATER DISPENSER

Our bottled water dispensers serve pure and clean water at the temperature you want. Perfect for when you want a hot cup of tea, a refreshing glass of lemonade or a plain glass of water. Apart from being hygienic, these dispensers are very easy to maintain. And come backed by an efficient national sales and service network.



## FEATURES



Stainless steel tank for corrosion resistance and better hygiene



Long-lasting plastic front panel and faucets



Convenient drip tray



Tropicalised for efficient cooling even in hot Indian conditions



Low power consumption



Quiet operations



Bimetal sensors to ensure protection against overheating

## Technical Specifications

G series - Bottom	Top loading Series - B		
BWD3BLGA	BWD1TTGB	BWD1FMCGB	BWD1FMRGB
Dispenses Hot/ Cold/ Ambient Water	Dispenses Hot/ Cold/ Ambient Water	Dispenses Hot/ Cold/ Ambient Water	Dispenses Hot/ Cold/ Ambient Water
LED	LED	LED	LED
NA	NA	20 ltr	20 ltr
230V / 50Hz / Single	230V / 50Hz / Single	230V / 50Hz / Single	230V / 50Hz / Single
SS 304 Food Grade	SS 304 Food Grade	SS 304 Food Grade	SS 304 Food Grade
3	3.2	3.2	3.2
3	3	3	3
80 W	80 W	80 W	86 W
0.9	0.9	0.9	0.9
5	5	5	5
500	500	500	500
Yes	Yes	Yes	Yes
Push Type/Child Lock for Hot Tap	Push Type/Child Lock for Hot Tap	Push Type/Child Lock for Hot Tap	Push Type/Child Lock for Hot Tap
3	1	1	1
R134a	R134a	R134a	R134a
310 x 365 x 1090	310X355X560	310X345X1010	310X355X1010
17	11	16	18



## STORAGE SOLUTIONS

We offer the widest range of freezers to help conserve and transport frozen produce. With a wide range of hard top freezers, we offer solutions to any application with sizes and capacities to meet any and every possible need.

For storage applications which do not require display for the consumer, we offer cost-effective hard-top freezers and bottle coolers. Hard-top freezers are economical yet rugged, reliable and well-suited for storage of typical general store provisions like dairy products and ready-to-cook packets which require freezing. For storing diverse range of products without occupying huge spaces, Blue Star's Cooler-cum-Freezer is ideal. It has a 2-in-1 facility to store frozen and chilled products. Soft-drinks, water bottles, beer etc. need storage in heavy-duty coolers that can cool rapidly despite the constant opening and closing of doors, and Blue Star Bottle Coolers serve that application admirably.

## Display-and-Store

In retail applications where high-end product display is essential for better presentation, impulse buying or simply to complement the aesthetics of the interiors, we offer glass-top freezers, Visi Coolers and Visi Freezers and for the premium end of the market, world-class display freezers with stunning looks. Glass-top freezers allow for frozen storage and a view of the products inside, offering a good balance between floor-space and display. Visi Coolers and Visi Freezers are upright refrigeration storages that look good and offer consumers a clear view of stored products, giving you great display to real estate ratio. And our latest launch, a range of Premium Display Freezers, offers you superb looks combined with efficient freezing – an unbeatable combination of the best of art, science and commerce.



## The Blue Star Advantage



Storage and/or display in appropriately chilled environment



Space for attractive product branding



Dispensing ease



High performance cooling/freezing



Easy maintenance



Availability of cost-effective genuine spares



Small footprint

## Hard-top Deep Freezers

### Frozen foods. Dynamic performance.

Deep Freezers are by far the best means to keep your stock fresh for longer durations. At the same time, they help your business perform better. Our range of Hard-top Deep Freezers incorporates cutting-edge technology and innovative features, guaranteeing long-lasting freshness. Built to last and to meet the demands of high sub-continental temperatures, these machines cut power bills through energy-saving innovations, helping your business grow. Just what you would expect from the expert.

## FEATURES



Corrosion-resistant body made of pre-coated sheet



Twin-door larger capacity models to avoid cooling loss



Locks in all models



High density PUF insulation for better holding time



Highly energy-efficient compressor



Eco-friendly refrigerant (R290)



Recessed handle



Heavy duty casters





## Technical Specifications

Description	Units	CHFSD100DSW/ CHFSD100DPW	CHFSD150DSW/ CHFSD150DPW	CHFSD200DSW/ CHFSD200DPW	CHFSD300DSW/ CHFSD300DPW	CHF300BG	CHFSD100FHPW	CHFSD150FHPW	CHFSD200FHPW	CHFSD300FHPW
Gross Capacity	L	95	145	188	285	300	99	142	198	295
Temperature Range		-24°C TO +8°C	-24°C TO +8°C	-24°C TO +8°C	-24°C TO +8°C	-18°C TO -22°C	-24°C TO +8°C	-24°C TO +8°C	-24°C TO +8°C	-24°C TO +8°C
Power Supply		230V/50Hz/1Ph	230V/50Hz/1Ph	230V/50Hz/1Ph	230V/50Hz/1Ph	230V/50Hz/1Ph	230V/50Hz/1Ph	230V/50Hz/1Ph	230V/50Hz/1Ph	230V/50Hz/1Ph
Refrigerant		R134a	R134a	R134a	R134a	R290a	R600a	R600a	R600a	R600a
No of Lids		1	1	1	1	1	1	1	1	1
Inner Cabinet		Stucco /PP	Stucco /PP	Stucco /PP	Stucco /PP	Stucco /PP	PP	PP	PP	PP
PUF Thickness	mm	70	70	70	70	70	60	60	60	75
Overall Dimensions	mm	574 x 564 x 845	754 x 564 x 845	950 x 564 x 845	1116 x 644 x 845	1000 x 663 x 770	565 x 545 x 850	730 x 523 x 850	945 x 523 x 850	1115 x 670 x 850
Net Weight	kg	27	31	35	41	59	23	30	35	42
No of Baskets		1	1	1	1	1	1	1	1	2

Description	Units	CHFDD300DSW/ CHFDD300DPW	CHF400HGW	CHF500HGW	CHF400B	CHF500B	CHFDD700DPW
Gross Capacity	L	285	400	470	400	500	665
Temperature Range		-24°C TO +8°C	-24°C TO +8°C	-24°C TO +8°C	-18°C TO -22°C	-18°C TO -22°C	-24°C TO +8°C
Power Supply		230V/50Hz/1Ph	230V/50Hz/1Ph	230V/50Hz/1Ph	230V/50Hz/1Ph	230V/50Hz/1Ph	230V/50Hz/1Ph
Refrigerant		R134a	R290	R290	R134a	R134a	R134a
No of Lids		2	2	2	2	2	2
Inner Cabinet		Stucco / PP	PP	PP	Stucco	Stucco	PP
PUF Thickness	mm	70	60	60	60	60	72
Overall Dimensions	mm	1116 x 644 x 845	1440 x 670 x 835	1640 x 670 x 835	1248 x 735 x 855	1546 x 735 x 862	1945 x 839 x 825
Net Weight	kg	45	65	73	68	73	85
No of Baskets		1	1	1	1	1	1

Note: Technical specifications are subject to change due to continuous product development.





## Cooler-cum-Freezer

Our Cooler-cum-Freezer is ideal for your business. It has a 2-in-1 facility to store frozen and chilled products and allows you to sell a diverse range of products. It saves space as it combines two machines in one. It is also cost-effective as it lowers capital investment and operating costs. And takes good care of your needs and your customers'.



## FEATURES

2

Dual compartment machine configured as freezer in one and cooler in the other



Two separate lids ensure independent access to freezer and cooler chambers



Easy to clean and maintain hygiene



Excellent drain design



Versatile wheels for easy movement and placement of unit



Fast freeze mode

## Technical Specifications

		CHFK300A	CHFK500A
Cooler Capacity	Ltr	137	144
Freezer Capacity	Ltr	175	297
Temperature Range - Cooler	°C	2°C to 8°C	2°C to 8°C
Temperature Range - Freezer	°C	-18°C to -22°C	-18°C to -22°C
Overall Dimensions (WxDxH)	mm	1336x680x865	1540x850x920
Net Weight	kg	53	72

Note: Technical specifications are subject to change due to continuous product development.

# BOTTLE COOLERS

## Quick Cooling for Quick Profits.

Keep your drinks chilled and your clients happy with Bottle Coolers from Blue Star, India's leading air conditioning and refrigeration company. Designed to meet the heavy demands of commercial businesses such as restaurants, hotels, pubs and fast food outlets, these coolers come with heavy-duty compressors that allow bottles to be chilled quickly. Built rugged and ready for operation in Indian conditions, they are the perfect solution for your business.

### Why a bottle cooler and not a deep freezer?

During summer, most beverage bottles and cans are delivered warm. To cool such bottles and cans in lesser time, you need a cooler with a heavy duty compressor that has adequate power. Normal deep freezer compressors come with a low capacity, suitable only for pre-frozen ice-creams. Also, the thermostats of these freezers are altered locally. All this makes deep freezers incompetent when it comes to faster and better cooling of beverages, especially in summer.

### Why a bottle cooler and not a refrigerator?

Refrigerators are essentially designed for home applications where door openings are few. These refrigerators come with small compressors that are incapable of handling large loads. Furthermore, they cannot maintain low temperatures during long power cuts. Bottle coolers on the other hand have double the capacity and can save up to 50% on the power bill.



## FEATURES



Range: 300, 400 & 500 ltrs



Option of PP/SS in a tank



PUF insulation



Low power consumption



Eco-friendly refrigerant



Recessed handle



Tropicalised for tough weather conditions



Double door option available in higher capacities



Pre-painted sheet for longer life and easy cleaning



Thermostat for accurate temperature control



## Technical Specifications

Description	Units	CHBK300A	CHBK300SSB	CHBK400A	CHBK400SSB	CHBK500A	CHBK500SSB
Gross Capacity	Ltr	291	291	400	400	470	470
Temperature Range		2°C to 8°C					
Power Supply		230V/Single Phase/50Hz					
Refrigerant		R134a					
No of Lids	Nos	2					
Inner Cabinet		Precoated GI Sheet	SS304	Precoated GI Sheet	SS304	Precoated GI Sheet	SS304
PUF Thickness	mm	60					
Overall Dimensions (WxDxH)	mm	1140X620X850	1140X620X850	1440X620X850	1440X620X850	1640X620X850	1640X620X850
Net Weight	kg	55	55	65	65	73	73
Wheels/Legs		Heavy Duty Castors					

Note: Technical specifications are subject to change due to continuous product development.

# Display-and-Store Solutions

## Visi Coolers and Visi Freezers

Our Visi Coolers and Visi Freezers are the smartest and easiest ways to preserve and display your products at the same time. The vertical storage Visi Coolers and Visi Freezers are specially designed to cool the products uniformly. The illuminated canopy can be customised to suit your branding needs. So while display increases product visibility, visibility increases sales and profits.



### FEATURES



Tropicalised for harsh Indian summers



Adjustable shelves



UV-protected galvanised sheets for interiors and exteriors



Energy efficient cooling unit



Eco-friendly refrigerant



Self-closing door with locking facility



Clear product visibility with reflective glass



Uniform cooling



Back-lit canopy option for merchandising



### Technical Specifications

		VC125D	VC175D	VC225D	VC275D	VC325D	VC555D
Gross Capacity	L	130	170	220	250	300	530
Temperature		+2°C to +8°C	+2°C to +8°C	+2°C to +8°C	+2°C to +8°C	+2°C to +8°C	+2°C to +8°C
Power Supply		230V/1Ph/50Hz	230V/1Ph/50Hz	230V/1Ph/50Hz	230V/1Ph/50Hz	230V/1Ph/50Hz	230V/1Ph/50Hz
Refrigerant		R600a	R600a	R600a	R600a	R600a	R290
No of Doors	Nos	1	1	1	1	1	2
Provision for Locking		Available					
Overall Dimensions (including hinge, castor etc)	mm	495 x 515 x 1160	495 x 515 x 1280	535 x 520 x 1735	575 x 600 x 1705	615 x 610 x 1790	1000 x 580 x 1855
Net Weight	kg	44	46	61	61	64	115
No of Shelves	Nos	Wire/3	Wire/4	Wire/4	Wire/4	Wire/4	Wire/4

Model		Visi Cooler			Visi Freezer
Description	Units	VC375E	VC690E	VC1200E	VF375E
Gross Capacity	L	372	657	945	300
Temperature		+1°C to +10°C			-18°C to -22°C
Power Supply		230V/1Ph/50Hz			230V/1Ph/50Hz
Refrigerant		R134a			R404a
No of Doors	Nos	1	1	2	1
Provision for Locking		Available			Available
Overall Dimensions (including hinge, castor etc)	mm	595 x 640 x 1980	780 x 705 x 2080	1200 x 742 x 2000	595 x 640 x 1965
Net Weight	kg	81	123	164	96
No of Shelves	Nos	5	5	5	6

\*LED light option available in VF375F model only.

Technical specifications are subject to change due to continuous product development.

## Glass-top Deep Freezers

### Frozen foods. Attractive display.

Our Deep Freezers are also available with glass-top sliding doors. They offer you economical freezing, storage and display solutions, ideal for smaller outlets which need both refrigeration and display. Products such as frozen fruits, ready-to-eat foods, ice-cream packs, etc. benefit from visibility which leads to impulse purchases.



Along with the features already listed earlier under Hard-top Deep Freezers, the Glass-top Freezer offers low-emission imported glass sliding doors on the top. Their better insulation properties also help in increasing hold-time. And the easy-slide glass doors make it convenient for a customer to make a choice personally.





### Technical Specifications

Description	Units	GTOL110B	GT200AG	GT300AG	GT400AG	GT500AG	GT300HG	GT400HG	GT500HG	
Gross Capacity	L	110	198	303	393	502	301	402	470	
Temperature Range		-18°C to -22°C								
Power Supply		230V/1Ph/50Hz								
Refrigerant		R134a			R290					
No of Lids	Nos	1			2					
Glass Type		Low Emissive Toughened Glass								
Inner Cabinet		Anodised Stucco Aluminium						PP		
PUF Thickness	mm	65						60		
Overall Dimensions (WxDxH)	mm	635x585x845	960x525x810	1005x670x889	1235x670x889	1515x670x889	1140 x 620 x 810	1440 x 620 x 810	1640 x 620 x 810	
Net Weight	kg	33	38	55	65	73	54	61	66	
No of Baskets	Nos	1	1	2	4	4	2	4	4	
Wheels/Legs		Heavy Duty Lockable Castors								

Note: Technical specifications are subject to change due to continuous product development.



## PREMIUM DISPLAY FREEZERS

Stunning looks. Superior performance.

Our range of premium display freezers is stunning in looks and superior in performance. The gorgeous and streamlined body is ideal for cooling and display of ice creams and frozen foods.







These premium display freezers are designed to have a small footprint so that they occupy less space. Widely used in departmental stores, parlours and eateries, a choice of premium models allow you to choose what is most suited to the economics of your business. The sides can be custom-branded to suit any particular company or product.

### Technical Specifications

	PDF200AG	PDF250AG	PDF300AG	PDF400E	PDF500E
Gross Capacity (L)	182	282	328	442	541
Temperature Range	-18°C to -22°C				
Power Supply	230V/1Ph/50Hz				
Refrigerant	R290			R404a	
No of Lids	2				
Glass Type	Low Emissive Toughened Glass				
Inner Cabinet	Anodised Stucco Aluminium				
PUF Thickness (mm)	70				
Overall Dimensions(WxDXH)mm	750x650x833	986x656x925	1224x624x840	1320 x 650 x 888	1570 x 650 x 888
Net Weight (kg)	47	56	70	72	110
No of Baskets	2	3	4	4	5
Wheels/Legs	Heavy Duty Lockable Castors				

Note: Technical specifications are subject to change due to continuous product development.



## Double-Decker Display Freezer

Our latest product offering is the new Double Decker Display Freezer. It creatively blends pieces of art to display merchandise uniquely. These display freezers are ideal for storage of impulse purchase products such as ice creams and popsicles. Innovatively built, it is suitable for air conditioned stores and rugged Indian conditions.

It is built to adapt to a smaller footprint and designed to increase your sales by ensuring a larger display of your products. Suitable for showcasing and retailing ice creams and frozen foods, it is ideal for middle and large-sized supermarkets.

### FEATURES



Tropicalised for harsh Indian summers



Ergonomic handles



Panoramic view of the merchandise



Quick freezing



Sleek and gorgeous looks



Strong wheels for easy movement



CFC free



Efficient and high-performance compressor



Lock facility available



Low noise operation

### Technical Specifications

	Units	DDF420E
Gross Capacity	Ltr	242
Temperature Range		-12°C to -22°C
Power Supply		230V/1Ph/50Hz
Refrigerant		R404A
Glass Type		Low Emissive Toughened Glass
Inner Cabinet		Anodised Stucco Aluminium
Insulation Material		PUF
Input Power	W	400
Overall Dimensions (WxDxH)	mm	1570 X 650 X 888
Wheels/Legs		Heavy Duty Lockable Casters



Note: Technical specifications are subject to change due to continuous product development.

A close-up photograph of several fresh, orange carrots with their green leafy tops. The carrots are arranged in a cluster, some pointing towards the bottom left and others towards the top right. They are resting on a dark, weathered wooden surface. The background is softly blurred, showing more green foliage. The lighting is natural and bright, highlighting the texture of the carrot skins.

Works for nature.  
Works for you.

# ECO-FRIENDLY GREEN PANELS WITH CYCLOPENTANE PUF INSULATION

Blue Star is known for its innovation and technological leadership and has introduced many cutting-edge products and solutions which offer higher efficiency, better performance and more reliability—factors that matter most to the customer, especially in the international marketplace.

We also ensure that every new solution we bring out is eco-friendly, helps to reduce global warming, has zero ozone depletion properties and contributes to a sustainable future. The introduction of the eco-friendly R410a refrigerant in most of our air conditioning solutions, for example, goes a long way in helping the country meet its obligations to reduce the use of HFCs under the Montreal Protocol.

We now introduce eco-friendly pre-fabricated insulation panel systems in a range of profiles, thicknesses, and finishes. The speciality of these panels is that they are perfect for the speedy creation of cold stores of any size at the site due to their precise interlocking design and great insulation properties. They are also eco-friendly both in their material and in their manufacturing process itself.

These new eco-friendly panel solutions can be used to create cold storages of any size, from small walk-ins to very large cold rooms.

## The Perfect Cold Room

Cold storage is a critical piece of infrastructure for any industry. The quality of stored produce and raw materials depends on the reliable and precise functioning of the cold storage.

Our experience in creating cold storages that offer different storage conditions in terms of temperature, humidity, fresh air, airflow etc. to suit different industry requirements has made us leaders in this domain as well.

Our engineers plan and design cold rooms based on advanced heat load calculations using internationally acclaimed software and build your cold rooms with great precision.



## Blue Star's Cold Storage Division's domain expertise extends to a wide spectrum of industries that includes:

Agro Industry	Healthcare	Meat Processing
Cold Chains	Horticulture	Pharmaceuticals
Dairy	Hotels & Restaurants	Ripening Chambers
Floriculture	Ice Cream	R & D Labs
Food Processing	Industrial Canteens	Sea Food



## Pre-fabricated from Blue Star

### **Panels**

Our new range of pre-fabricated insulation panel systems come with easy-to-use interlocking panels that can be used to create cold rooms of any size at the site.

Since the insulation material in these panels is foamed between two metal skins, they offer highly effective insulation for cold rooms.

What's more, these panels are designed to ensure precision interlocking and hence they form leak-free walls ideal for cold rooms.

Manufactured in a wide range of profiles, thicknesses and finishes, these systems can be used to create cold stores at the site and of any size – from small walk-ins to very large cold rooms.



## Doors

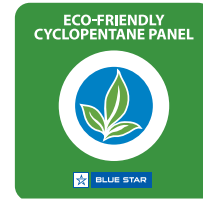
We offer a complete range of insulated doors to complement the world-class environment friendly PUF panels.

The polyurethane foam insulation sandwiched between the GI sheets makes the doors perfect for high-performance cold rooms.

- **Self-closing:** Ensures that the door remains closed without any human interaction.
- **Safety release:** Doors can be opened from the inside.
- **View port:** Helps view products stored inside without opening the door, which is not just for convenience but for power saving too.
- **Posi seal:** Provides perfect alignment of frames and ensures perfect closing movement.
- **Sweep gasket:** Air-tight heavy-duty sealing gasket below the door remains flexible at any temperature.
- **Thermal break:** Eliminates thermal conductivity which otherwise leads to condensation and ice formation.

## An Eco-friendly DNA

Our new range of pre-fabricated insulation panels are eco-friendly from the ground-up since even the manufacturing process is green.



Panel systems

### Cyclopentane: The eco-friendly blowing agent

Cyclopentane is increasingly becoming an industry standard the world over as an eco-friendly blowing agent. We also use cyclopentane as the blowing agent in the manufacture of our new series of insulation panels. This makes the panels 'green' even in their manufacturing process, and further underlines our commitment to a greener tomorrow.

This ensures zero Ozone Depleting Potential (ODP) and reduces Global Warming Potential (GWP) as compared to the more generally used HCFC-141b which is not eco-friendly.

## Why Cyclopentane

**ODP (Ozone Depletion potential): 0**

**GWP (Global Warming Potential): Negligible (11)**

**Complies with TUV Standards, CCOE (India) Certification**

Blue Star's commitment to a healthy environment is thus further reinforced by this investment in a cyclopentane process, which not only ensures superior yet environmentally friendly products, but also supports India's obligations under the Montreal Protocol on 'Substances that Deplete the Ozone Layer'.



### Cyclopentane vs Conventional HCFC-141b :

Sr. No.	PARTICULARS	HCFC 141b	CYCLOPENTANE
1	GWP (Global-Warming Potential)	630	11
2	ODP (Ozone-Depletion Potential)	o.11	0
3	Fire Retardant Property	Self-extinguishing	Self-extinguishing



## CFC and HCFC-free Polyurethane

The insulation material used within our new range of pre-fab panel systems is also eco-friendly, being made of CFC/HCFC-free polyurethane.

This is in accordance with India's obligations under the Montreal Protocol on 'Substances that Deplete the Ozone Layer', which the 'Ozone Cell' (specially created within the Ministry of Environment, Govt of India) is spearheading under the 'HCFC Phase Out Management Plan (HPMP) Stage 1B'.

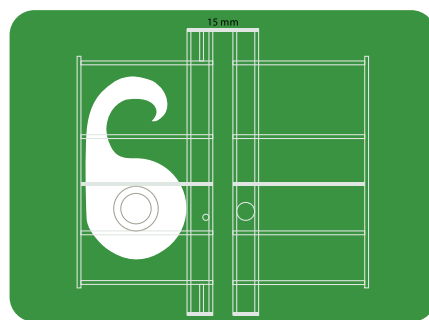
Facilities aiming to become green buildings will find these panels ideal for their LEED certification process.



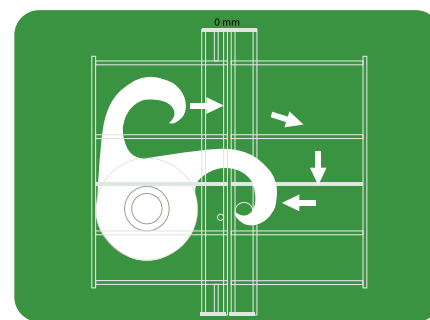
## Precision Locking Mechanism

Each Blue Star pre-fabricated insulation panel has cam-action locking devices precisely positioned and firmly anchored within it. All cam-locks have integral rear flanges to permanently anchor their position during the manufacture of the PUF panels. Cam-locks are also placed at exact matching locations on the tongue and groove side to ensure perfect locking.

All cam-locks are accessible from the inside by means of a hex wrench furnished with the panels. Access ports for cam-locks are covered with snap-in cap plugs that must be snapped out before accessing the cam-locks thus making them tamper-proof.



BEFORE LOCKING THE PANEL



AFTER LOCKING THE PANEL



## Technical Specifications

SR. NO.	DESCRIPTION	GENERAL SPECIFICATIONS
1	PUF Panel Thickness	60/80/100/150mm
2	PUF Panel Cover	PP or SS
3	Sheet Metal Thickness	0.4/0.5mm
4	Temperature Range	-40°C to +80°C
5	PUF Blowing Agent	Cyclopentane (C5) - (CFC & HCFC free)
6	Lock Arrangement	Cam-Lock with Metal Plunger
7	PUF Density	40kg/m <sup>3</sup> ±
8	K - value (w/m <sup>2</sup> k)	0.021- 0.023
9	Panel Length	Upto 11.5mm
10	Panel Width	11.5/23/34.5/46 inches
11	Panel Joint	Tongue & Groove Joint
12	Panel to Panel Fitment	The Gap Between Two Fitted Panels < 3 mm





## FEATURES AND BENEFITS



PUF insulation core ensures excellent K factor



High density polyurethane offers better strength



Perfect joints eliminate air leakages



Effective thermal insulation results in negligible thermal conductivity



Suitable for a wide temperature range of  $-40^{\circ}\text{C}$  to  $+80^{\circ}\text{C}$



In case of fire, stops burning when source of fire is removed



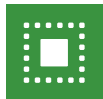
Occupies less space due to efficient insulation



Uses eco-friendly blowing agent cyclopentane



Modular construction resulting in faster installation



Easily expandable to larger sizes



Available in stainless steel and pre-painted GI



Thickness range from 60mm to 150mm



90° corner panels to ensure stability

## Wide Range of Refrigeration Units

We offer a wide range of both evaporating and condensing units. It includes both air-cooled and water-cooled condensers with technology from world leaders.

Depending on the application, different temperature zones need to be maintained:

Low (-23°C to -5°C),

Medium (-5°C to +2°C),

High (+2°C to +15°C)



### Evaporating units

Our evaporating units are compact, slim and sleek; so they occupy minimum space ensuring maximum storage space. Other features include:



Stainless steel body and excellent corrosion resistance



Inner grooved copper tubes for superior heat transfer



In-built defrost heaters for low-temperature units



External rotor driven fans with low noise levels



Removable side panels for easy service



### Condensing Units

These units are characterised by high-efficiency heat transfer and low power consumption. Other features include:



Energy-efficient scroll and reciprocating compressors



UV and corrosion resistance



Filter drier for moisture and dirt protection



Pre-charged unit with service valves



In-built safety and control devices



Weather-proof polyester powder coated canopy



## Microprocessor Controller and Power Panel

Our refrigeration units come with intelligent microprocessor-powered controllers which are BMS compatible and HACCP provisioned (available in select models).

- Ready-to-use power panels which make electrical connections simple, safe, fast and long-lasting. They are available with every refrigeration unit.
- Powder-coated weather proof housing
- Protection against common electrical failures
- Interlock of safety features





## Perfect Installations

Without carefully executed installations, the efficiency and reliability of a cold room can be compromised. Our engineers are equipped with the latest technology and knowledge which enables them in carrying out precise installations. Example checks considered by them are:

- The location of the evaporator within the cold room for uniform cooling and air distribution
- Level flooring (0-0 level) to avoid misalignment of walls
- Proper selection of copper parts and pipe sizes
- Minimising bends and unduly long runs

İcecek

Muzer Yiyecek

Tatlı



# SUPERMARKET REFRIGERATION

Blue Star now offers a new, cutting-edge range of models in supermarket refrigeration. These new models are sustainable, practical, elegant and consumes less power due to their smart design.



The range of Open Chillers and Freezers is designed aesthetically as well as with the use of path-breaking technology for strong operations, preserving the freshness of foods, while maximizing display area for products stored.



Owing to a compact build and wall-side plug-in, Multi-deck Refrigeration Cabinets can be installed into any store format, existing or planned. An open design allows excellent viewing and easy picking for consumers, whilst maintaining long-lasting freshness at low energy consumption rates- making shelving easy for dairy, vegetables and fruits.



Created to ensure maximum display area, the Cake Showcase comes in two designs – curved and squared – with an optional marble base, and technology that avoids frost formation.



The uniquely designed Pyramid Chillers, with optional mirror side panels, provide uninterrupted cooling.



The Display Counter design, that comes with a slide glass canopy, gives frozen foods like fish and meat a wider display area while the food grade steel interiors preserve food material for lengthy periods of time.

MULTIDECK CHILLERS - KRYSTA



## FEATURES



Small footprint with compact design



Accessible and ergonomic



Fully configurable to different concepts



Easily adaptable to changes of product



Reduces energy consumption with higher evaporation temperature



Low operating costs



Practical fittings designed for simplified installation and maintenance



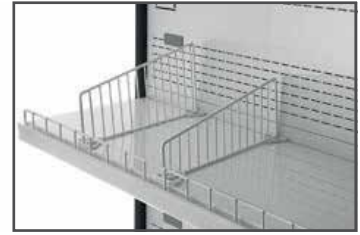
Eco-friendly refrigerant



GRID FRONT RISER



PLEXI SHELF DIVIDER



GRID SHELF DIVIDER



BASIN DIVIDER



CANOPY OR UNDER-SHELF LED LIGHTING



SHELF LIGHTING T5/T8



SLIDING OR HINGED DOOR



FRONT THERMOPANE GLASS



PLEXI FRONT RISER



GLASS SHELF



HOOK BAR

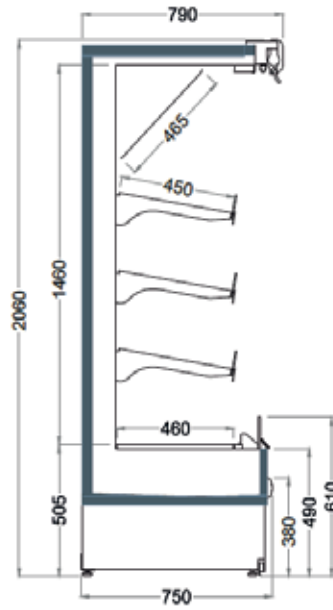
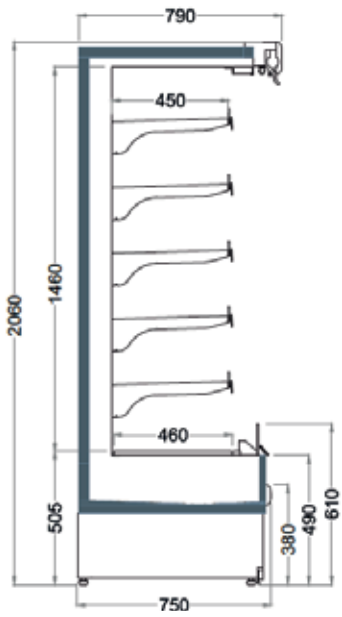


SHELF LIGHTING T5/T8



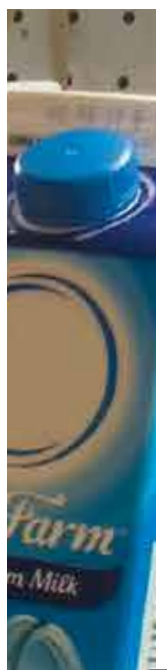
DELICATESSEN

FRUIT & VEGETABLE



Technical Specifications

	KRYSTA 12C FV/MT/DL	KRYSTA 18C FV/MT/DL	KRYSTA 25C FV/MT/DL
<b>Dimensions</b>	2060 x 1250 x 750	2060 x 1875 x 750	2060 x 2500 x 750
<b>Temperature Range</b>	FV : +4°C to +6°C		
	DL : +2°C to +4°C		
	MT : -1°C to +1°C		
<b>Refrigerant</b>	R134A / R404A / R407F / R449A / R290 / R1270		
<b>Electrical Supply</b>	230V/50Hz/1Ph		
<b>Climate Class</b>	3 (25°C, 60% RH)		
<b>Display Area (m<sup>2</sup>)</b>	DL : 3.39	DL : 5.08	DL : 6.78
	FV : 2.26	FV : 3.39	FV : 4.53





## OPEN CHILLERS-KORAL

### FEATURES



Large flexible display area



Double tempered & low emissivity glass



Price holders Flapson shelf



Keeps delicate Fruit and dairy fresh



Electronic temperature control with digital display



Available in different Sizes in ft : 3, 4, 6, 8



Designed for modular configuration



Energy saving night blind

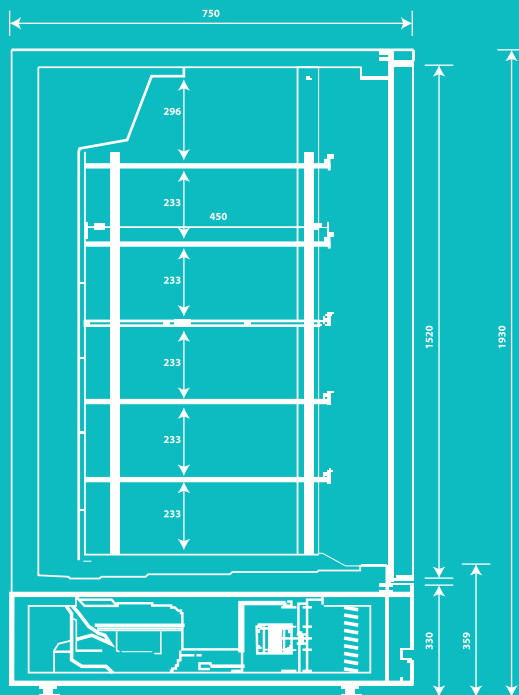


Low operation cost and maintenance



4 adjustable white prepainted galvanized steel shelves





## TECHNICAL SPECIFICATION

MODEL NUMBER	KORAL10CFV/DL/MT	KORAL12CFV/DL/MT	KORAL18CFV/DL/MT	KORAL25CFV/DL/MT
Function	Chiller	Chiller	Chiller	Chiller
Size In Ft	3.28	4.28	6.32	8.35
Temp Range °C	1°C To 10°C	1°C To 10°C	1°C To 10°C	1°C To 10°C
Voltage/Frequency	220~240/50 1 Phase	220~240/50 1 Phase	220~240/50 1 Phase	220~240/50 1 Phase
Refrigerant	R404a	R404a	R404a	R404a
Condensor Type	Copper	Copper	Copper	Copper
Evaporator Type	Copper + Fins	Copper + Fins	Copper + Fins	Copper + Fins
<b>Features</b>				
Price Ticket Strip	Yes	Yes	Yes	Yes
Night Blind	Yes	Yes	Yes	Yes
Shelf	4 Shelves	4 Shelves	4 Shelves	4 Shelves
Side Panel	Tempered Glass	Tempered Glass	Tempered Glass	Tempered Glass
Light	Yes	Yes	Yes	Yes
Temp Display	Digital	Digital	Digital	Digital
Colour Option	Multiple	Multiple	Multiple	Multiple
Product Dimension (W x D x H) in mm	985 X 750 X 1930	1285 X 750 X 1930	1895 X 750 X 1930	2505 X 750 X 1930
Packaging Dimension (W x D x H) in mm	1080 X 850 X 2120	1385 X 850 X 2120	1995 X 850 X 2120	2605 X 850 X 2120
Weight in kg	180	210	310	395
Gross Weight in kg	208	242	355	450

## SERVE OVER-KORAL



### FEATURES



Uniform cooling across the display area



Adjustable temperature setting for assorted products



Interior LED lighting



Available in different Sizes in ft : 4, 6, 8 & 12



Electronic temperature display



Consume less energy



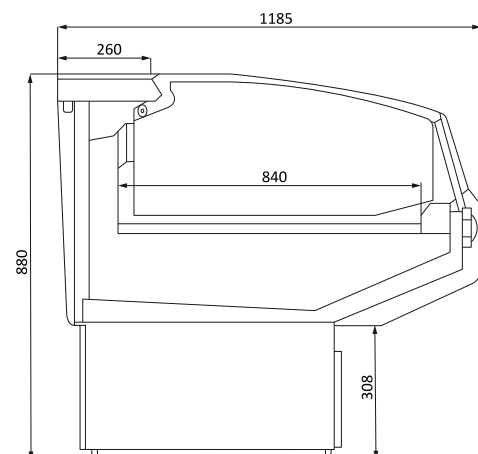
Inner cabinet Food Grade Steel



Automatic defrost



Double tempered & low emissivity glass





## TECHNICAL SPECIFICATION

MODEL NUMBER	KORAL12CSEP	KORAL18CSEP	KORAL24CSEP	KORAL36CSEP	KORAL12CSECP	KORAL18CSECP	KORAL24CSECP	KORAL36CSECP
Function	Chiller	Chiller	Chiller	Chiller	Chiller	Chiller	Chiller	Chiller
Size In Ft	4.5	6.5	8.6	12.8	4.5	6.5	8.6	12.8
Temp Range °C	-1°~5°C	-1°~5°C	-1°~5°C	-1°~5°C	-1°~5°C	-1°~5°C	-1°~5°C	-1°~5°C
Voltage/Frequency	220VAC~240VAC 50Hz	220VAC~240VAC 50Hz	220VAC~240VAC 50Hz	220VAC~240VAC 50Hz	220VAC~240VAC 50Hz	220VAC~240VAC 50Hz	220VAC~240VAC 50Hz	220VAC~240VAC 50Hz
Refrigerant	R404a	R404a	R404a	R404a	R404a	R404a	R404a	R404a
Condensor Type	Copper	Copper	Copper	Copper	Copper	Copper	Copper	Copper
Evaporator Type	Copper + Fins	Copper + Fins	Copper + Fins	Copper + Fins	Copper + Fins	Copper + Fins	Copper + Fins	Copper + Fins
<b>Features</b>								
Side Panel	Tempered Glass	Tempered Glass	Tempered Glass	Tempered Glass	Yes	Yes	Yes	Yes
Light	Yes	Yes	Yes	Yes	4Nos	4Nos	4Nos	4Nos
Glass Canopy	No	No	No	No	Tempered Glass	Tempered Glass	Tempered Glass	Tempered Glass
Glass Support	No	No	No	No	Yes	Yes	Yes	Yes
Temp Display	Digital	Digital	Digital	Digital	Digital	Digital	Digital	Digital
Colour Option	Multiple	Multiple	Multiple	Multiple	Multiple	Multiple	Multiple	Multiple
Product Dimension (W x D x H) in mm	1350 X 185 X 880	1975 X 1185 X 880	2600 X 1185 X 880	3850 X 1185 X 880	1350 X 1185 X 1150	1975 X 1185 X 1150	2600 X 1185 X 1150	3850 X 1185 X 1150
Packaging Dimension (W x D x H) in mm	1508 X 1343 X 1006	2133 X 1343 X 1006	2758 X 1343 X 1006	4008 X 1343 X 1006	1508 X 1343 X 1276	2133 X 1343 X 1276	2758 X 1343 X 1276	4008 X 1343 X 1276
Weight in kg	110	170	210	310	178	214	260	350
Gross Weight in kg	140	245	295	365	210	294	350	410



## ISLAND FREEZER - KORAL

### FEATURES



Overhead glass cover & sliding door



Glass door sliding top and bottom



LED display



Adjustable temperature setting for different products



Electronic temperature control with display



Available in different colours and Sizes



Wide display area with four side tempered glass



Caster wheels with locks

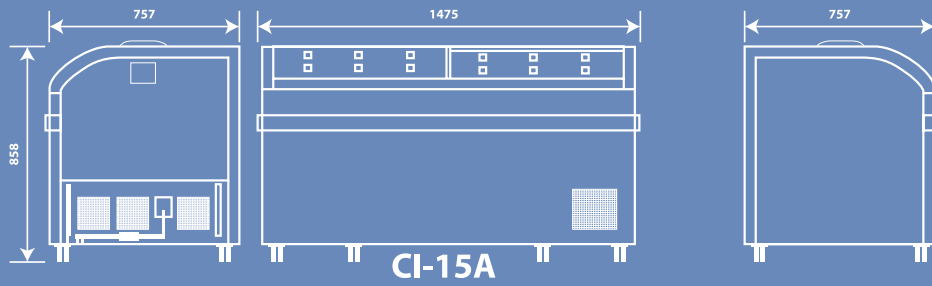


Double air curtain and high cooling efficiency

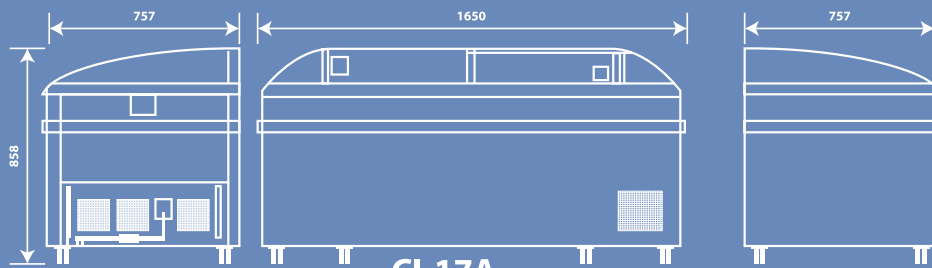


Copper condenser and evaporator

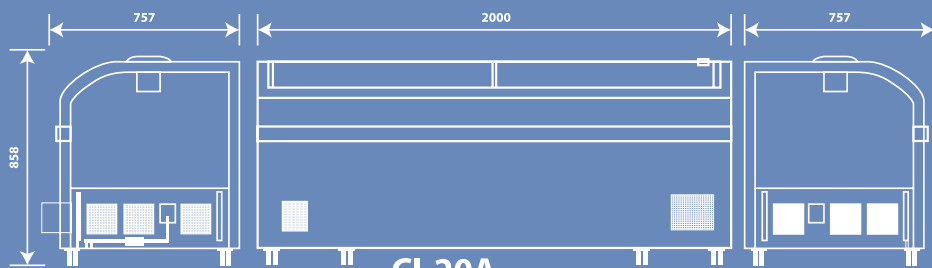




CI-15A



CI-17A



CI-20A

## Technical Specifications

	<b>BILF 19AEN</b>	<b>BILF 20AEN</b>	<b>BILF 19AENCG</b>	<b>BILF 20AENCG</b>
Function	Freezer	Freezer	Freezer	Freezer
Size In Ft	6.3	6.6	6.3	6.3
Temp Range°C	-18°C	-18°C	-18°C	-18°C
Grosscapacity In Ltrs	790	890	850	900
Voltage/Frequency	220VAC~240VAC°C50Hz	220VAC~240VAC°C50Hz	220VAC~240VAC°C50Hz	220VAC~240VAC°C50Hz
Refrigerant	R290	R290	R290	R290
Condensor & Evaporator Type	Copper	Copper	Copper	Copper
Features				
Inner Tank	Prepainted Steel	Prepainted Steel	Prepainted Steel	Prepainted Steel
Basket Available	Yes	Yes	Yes	Yes
Caster Wheels	6 Nos. Yes	6 Nos. Yes	6 Nos. Yes	6 Nos. Yes
Top Glass Sliding	Top-Bottom	Top-Bottom	Left - Right	Left - Right
Light	Yes	Yes	Yes	Yes
Temp Display	Digital	Digital	Digital	Digital
Colour Option	Multiple	Multiple	Multiple	Multiple
Product Dimension(WxDxH) Inmm	1915×890×820	2000×890×880	1915×890×820	2000×890×880
Packaging Dimension(WxDxH) Inmm	1970×940×925	2055×940×985	1970×940×925	2055×940×985
Weight In Kg	113	139	130	133
Gross Weight In Kg	139	166	155	160

Note: Technical specifications are subject to change due to continuous product development.



No 85 Deepa Complex Road Geologist Layout 2nd Stage Near Kavempu Park

Srigandadakaval Nagarbhavi Bangalore -560072

**Mob:** +91-7022457823 / +91-9482262253

**Email :** [creativerefrigeration2018@gmail.com](mailto:creativerefrigeration2018@gmail.com)

**Web:** [www.creativerefrigeration.com](http://www.creativerefrigeration.com)

